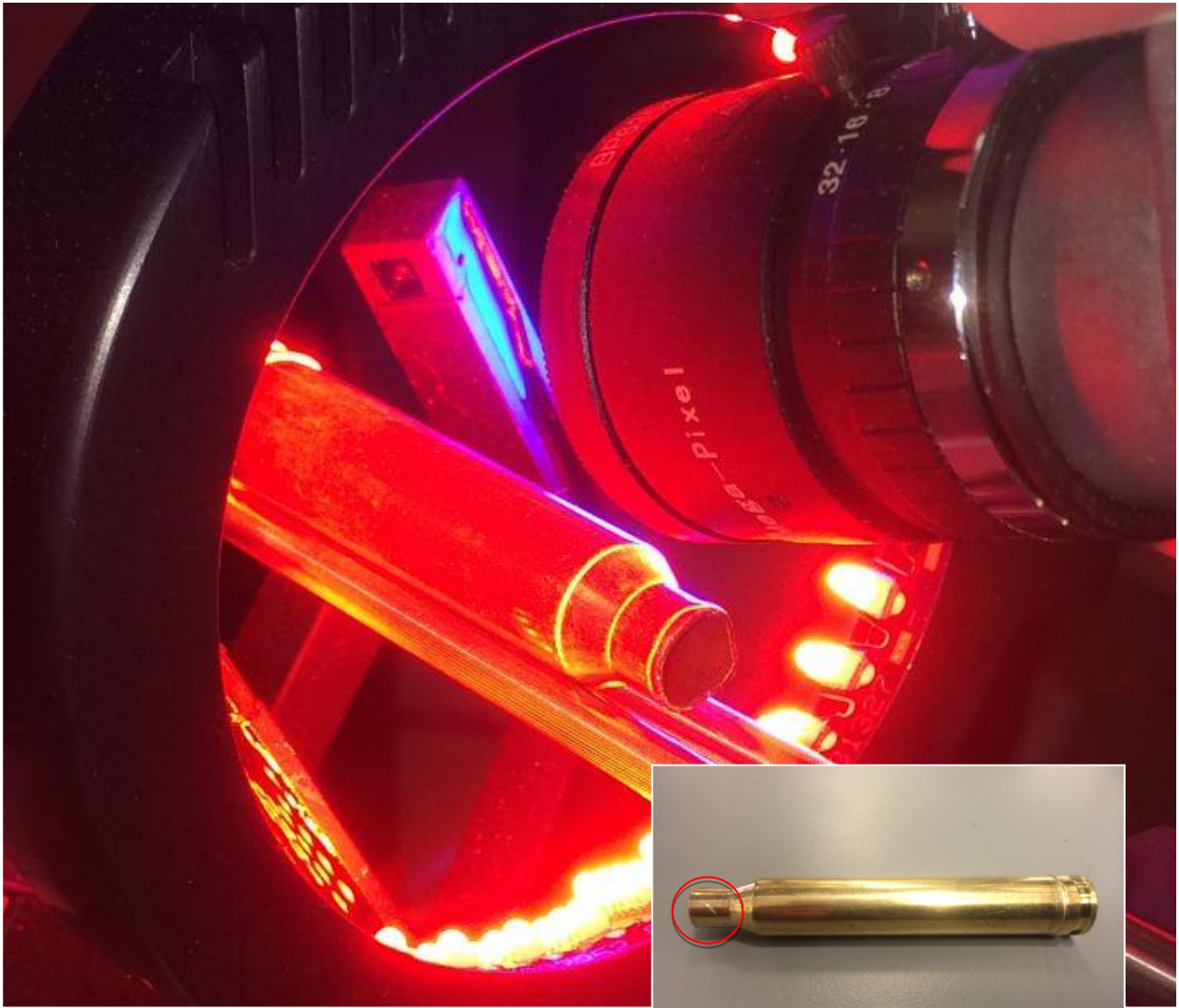


Mabema AAI

Mabema AAI, Automated Ammunition Inspection, is an inline inspection machine developed for quality inspection of cases and cartridges.



- 100% surface inspection
- High throughput
- Megapixel resolution
- Real time statistics
- Improve product- and process control
- User friendly software



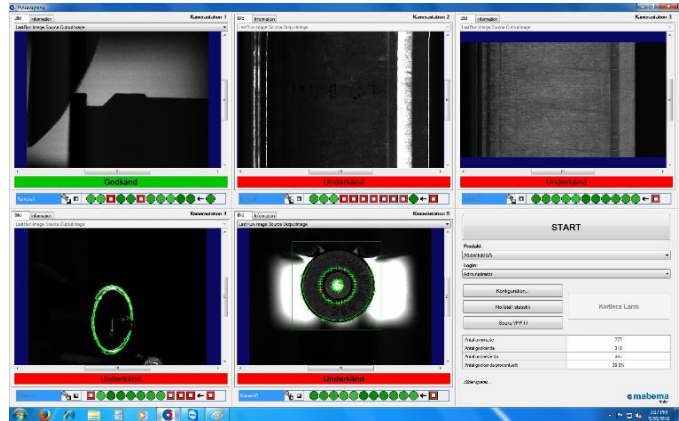
Mabema AAI

Mabema AAI inspects cases and cartridges at high rate. Five cameras provide a 100% surface inspection.

Inspection executes while the parts rapidly slides through the machine. As standard the machine is equipped with three area cameras and two line scan camera for surface inspection. The AAI can be complemented with additional cameras if necessary. Defect products are automatically sorted out to four different fractions depending on defect.

Measurement examples:

- Split cases
- Scratches
- Dents
- Wrinkles
- Case length
- Defective mouth
- Flange diameter, thickness and shape
- Wrong or missing head stamp
- Missing or misplaced primer
- Defective or missing extractor groove
- Mixed types



The operator interface provides easy access to inspection results, settings and statistics. Real time statistics can also be stored in to a customer specific text file for data export.



Technical Data	
Cabinet	
Foot print (w,d,h)	1400 x 800 x 2000 mm
Weight	250 kg
Noise Level	Max. 70 dB
Capacity	
Part diameter	7-20 mm
Throughput	Up to 110 parts per minute
Cameras	3 x Areascan (1,3 megapixel) 2 x Linescan (1 x 4000)
Resolution	0,02-0,05 mm/pixel
Connections	
Communication	Ethernet (TCP/IP)
Power requirements	230V, 10A
Air pressure	8 bar